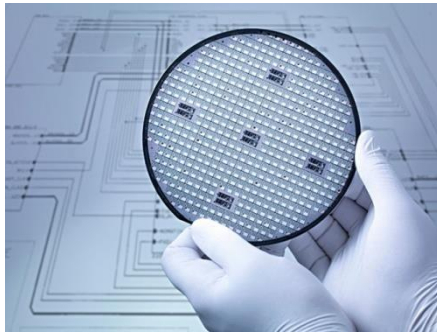


95mil TVS 芯片选型



TVS Diode series



095TVS

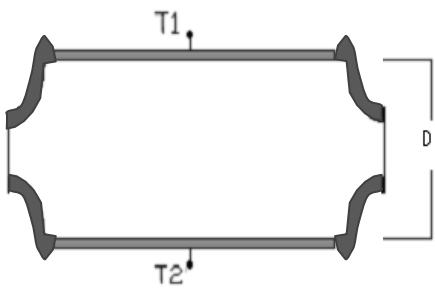
描述

TVS 系列产品是一种专门用来保护敏感电子设备免受雷电或者瞬态电压冲击的器件。

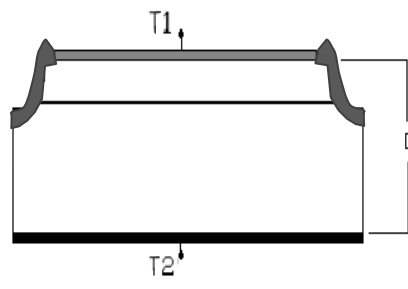
- 低漏电流
- 快速相应速度 (从 0->VBR 响应时间小于 1ps)
- 玻璃钝化结
- 良好的钳位能力
- 匹配大凸台框架的情况下, 可承受 1000W 峰值脉冲 (10/1000 μ s)

芯片结构图

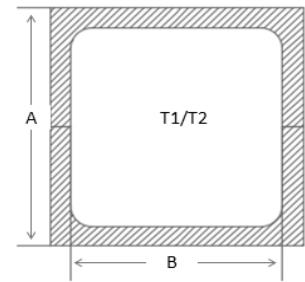
芯片工艺 Wafer tech	台面玻璃钝化工艺	
圆片尺寸 Wafer Size	Φ 5inch	
芯片厚度 Chip Thickness	D=265 \pm 15 μ m(可根据客户要求定制)	
金属 (T1/T2) Metal	正面 Front	TiNiAg
	背面 Back	TiNiAg
芯片尺寸 Chip Size	芯片尺寸(A: μ m) Chip	2431 \pm 50
	电极尺寸(B: μ m) Pad	2118 \pm 25



(图 1: 双向 TVS 外沟槽结构示意图)



(图 2: 单向 TVS 外沟槽结构示意图)



(图 3: 芯片尺寸示意图)

芯片电参数-TVS (VR)

单向	双向	V _{RWM}	V _{BR} @ I _T		I _T	V _c @ I _{pp}	I _{pp}	I _R @ V _{RWM}
		(V)	(V)min	(V)max	(mA)	(V) max	(A) min	(μA) max
TP0095-N5V0A2	TP0095-N5V0C1	5	6.4	7	10	9.2	108.7	500
TP0095-N6V0A2	TP0095-N6V0C1	6	6.67	7.37	10	10.3	97.1	500
TP0095-N6V5A2	TP0095-N6V5C1	6.5	7.22	7.98	10	11.2	89.3	100
TP0095-N7V0A2	TP0095-N7V0C1	7	7.8	8.6	10	12	83.4	50
TP0095-N7V5A2	TP0095-N7V5C1	7.5	8.33	9.21	1	12.9	77.6	50
TP0095-N8V0A2	TP0095-N8V0C1	8	8.89	9.83	1	13.6	73.6	50
TP0095-N8V5A2	TP0095-N8V5C1	8.5	9.44	10.4	1	14.4	69.5	20
TP0095-N9V0A1	TP0095-N9V0C1	9	10	11.1	1	15.4	65.0	10
TP0095-N010A1	TP0095-N010C1	10	11.1	12.3	1	17	58.9	5
TP0095-N011A1	TP0095-N011C1	11	12.2	13.5	1	18.2	55.0	1
TP0095-N012A1	TP0095-N012C1	12	13.3	14.7	1	19.9	50.3	1
TP0095-N013A1	TP0095-N013C1	13	14.4	15.9	1	21.5	46.6	1
TP0095-N014A1	TP0095-N014C1	14	15.6	17.2	1	23.2	43.1	1
TP0095-N015A1	TP0095-N015C1	15	16.7	18.5	1	24.4	41.0	1
TP0095-N016A1	TP0095-N016C1	16	17.8	19.7	1	26	38.5	1
TP0095-N017A1	TP0095-N017C1	17	18.9	20.9	1	27.6	36.3	1
TP0095-N018A1	TP0095-N018C1	18	20	22.1	1	29.2	34.3	1
TP0095-N020A1	TN0095-N020C3	20	22.2	24.5	1	32.4	30.9	1
TP0095-N022A1	TN0095-N022C3	22	24.4	26.9	1	35.5	28.2	1
TP0095-N024A1	TN0095-N024C3	24	26.7	29.5	1	38.9	25.7	1
TP0095-N026A1	TN0095-N026C3	26	28.9	31.9	1	42.1	23.8	1
TP0095-N028A1	TN0095-N028C3	28	31.1	34.4	1	45.4	22.1	1
TP0095-N030A1	TN0095-N030C3	30	33.3	36.8	1	48.4	20.7	1
TP0095-N033A1	TN0095-N033C3	33	36.7	40.6	1	53.3	18.8	1
TP0095-N036A1	TN0095-N036C3	36	40	44.2	1	58.1	17.2	1
TP0095-N040A1	TN0095-N040C3	40	44.4	49.1	1	64.5	15.5	1
TP0095-N043A1	TN0095-N043C3	43	47.8	52.8	1	69.4	14.4	1
TP0095-N045A1	TN0095-N045C3	45	50	55.3	1	72.7	13.8	1
TP0095-N048A1	TN0095-N048C3	48	53.3	58.9	1	77.4	13.0	1
TP0095-N051A1	TN0095-N051C3	51	56.7	62.7	1	82.4	12.2	1
TP0095-N054A1	TN0095-N054C3	54	60	66.3	1	87.1	11.5	1
TP0095-N058A1	TN0095-N058C3	58	64.4	71.2	1	93.6	10.7	1
TP0095-N060A1	TN0095-N060C3	60	66.7	73.7	1	96.8	10.3	1
TP0095-N064A1	TN0095-N064C3	64	71.1	80.6	1	103	9.7	1
TN0095-N070A1	TN0095-N070C3	70	77.8	86	1	113	8.9	1
TN0095-N075A1	TN0095-N075C3	75	83.3	92.1	1	121	8.3	1
TN0095-N080A1	TN0095-N080C3	80	86.7	95.8	1	126	7.9	1
TN0095-N085A1	TN0095-N085C3	85	94.4	104	1	137	7.3	1
TN0095-N090A1	TN0095-N090C3	90	100	111	1	146	6.9	1



芯片电参数-TVS(VBR)

单向	双向	V_{RWM}	$V_{BR} @ I_T$		I_T	$V_C @ I_{pp}$	I_{pp}	$I_R @ V_{RWM}$
		(V)	(V)min	(V)max	(mA)	(V) max	(A) min	(μ A) max
TP0095-P6V8A2	TP0095-P6V8C1	5.8	6.45	7.14	10	10.5	95.2	500
TP0095-P7V5A2	TP0095-P7V5C1	6.4	7.13	7.88	10	11.3	88.5	100
TP0095-P8V2A2	TP0095-P8V2C1	7.02	7.79	8.61	10	12.1	82.6	100
TP0095-P9V1A2	TP0095-P9V1C1	7.8	8.65	9.55	1	13.4	74.6	20
TP0095-P010A2	TP0095-P010C1	8.55	9.5	10.5	1	14.5	69.0	10
TP0095-P011A2	TP0095-P011C1	9.4	10.5	11.6	1	15.6	64.1	5
TP0095-P012A1	TP0095-P012C1	10.2	11.4	12.6	1	16.7	59.9	1
TP0095-P013A1	TP0095-P013C1	11.1	12.4	13.7	1	18.2	54.9	1
TP0095-P015A1	TP0095-P015C1	12.8	14.3	15.8	1	21.2	47.2	1
TP0095-P016A1	TP0095-P016C1	13.6	15.2	16.8	1	22.5	44.4	1
TP0095-P018A1	TP0095-P018C1	15.3	17.1	18.9	1	25.2	39.2	1
TP0095-P020A1	TP0095-P020C1	17.1	19	21	1	27.7	36.1	1
TP0095-P022A1	TP0095-P022C3	18.8	20.9	23.1	1	30.6	32.7	1
TP0095-P024A1	TN0095-P024C3	20.5	22.8	25.2	1	33.2	30.1	1
TP0095-P027A1	TN0095-P027C3	23.1	25.7	28.4	1	37.5	26.7	1
TP0095-P030A1	TN0095-P030C3	25.6	28.5	31.5	1	41.4	24.2	1
TP0095-P033A1	TN0095-P033C3	28.2	31.4	34.7	1	45.7	21.9	1
TP0095-P036A1	TN0095-P036C3	30.8	34.2	37.8	1	49.9	20.0	1
TP0095-P039A1	TN0095-P039C3	33.3	37.1	41	1	53.9	18.6	1
TP0095-P043A1	TN0095-P043C3	36.8	40.9	45.2	1	59.3	16.9	1
TP0095-P047A1	TN0095-P047C3	40.2	44.7	49.4	1	64.8	15.4	1
TP0095-P051A1	TN0095-P051C3	43.6	48.5	53.6	1	70.1	14.3	1
TP0095-P056A1	TN0095-P056C3	47.8	53.2	58.8	1	77	13.0	1
TP0095-P062A1	TN0095-P062C3	53	58.9	65.1	1	85	11.8	1
TP0095-P068A1	TN0095-P068C3	58.1	64.6	71.4	1	92	10.9	1
TP0095-P075A1	TN0095-P075C3	64.1	71.3	80.8	1	103	9.7	1
TN0095-P082A1	TN0095-P082C3	70.1	77.9	86.1	1	113	8.8	1
TN0095-P091A1	TN0095-P091C3	77.8	86.5	95.5	1	125	8.0	1
TN0095-P100A1	TN0095-P100C3	85.5	95	105	1	137	7.3	1